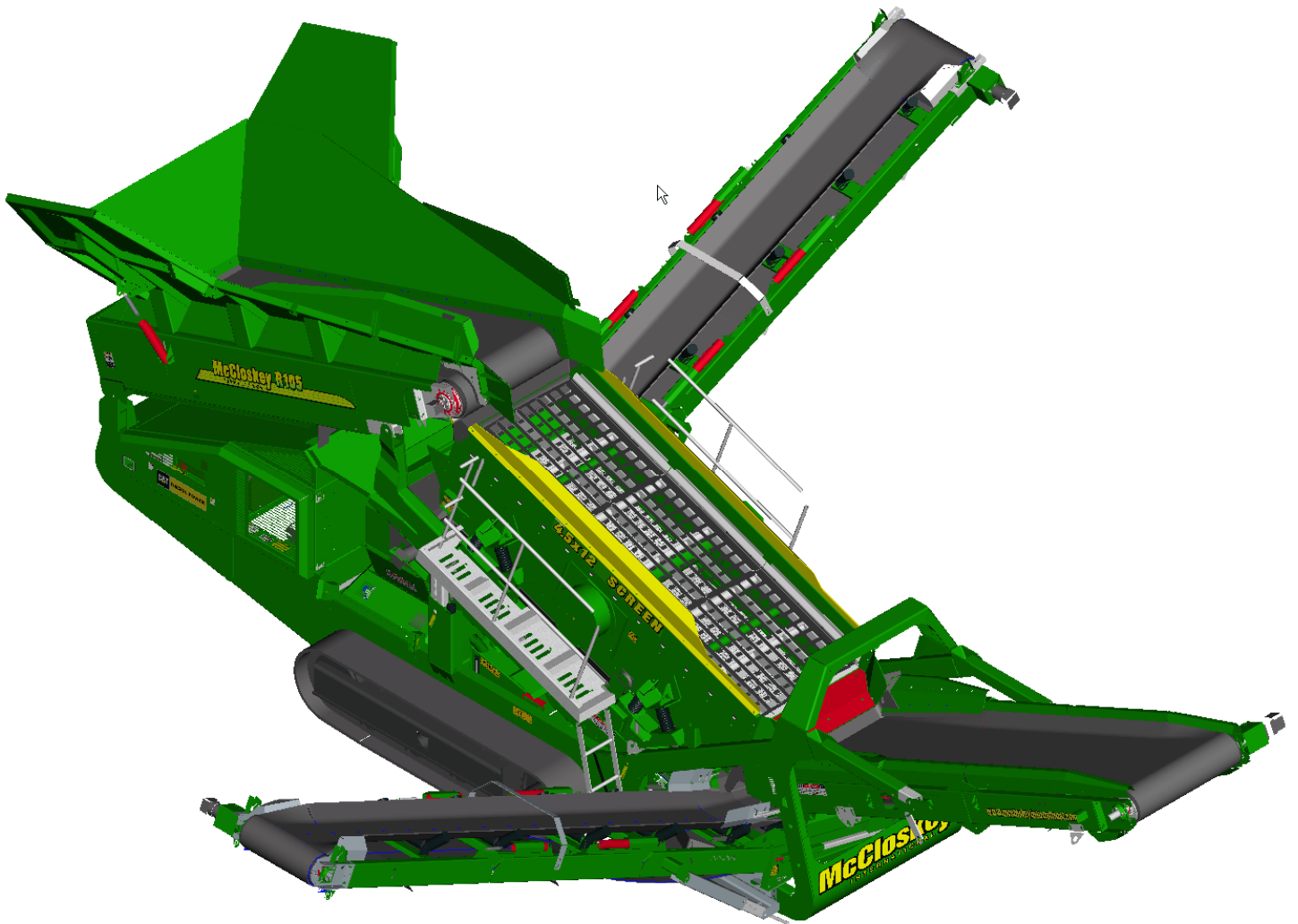
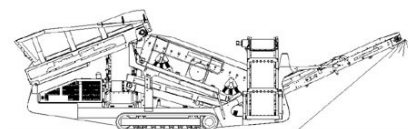


SPECIFICATIONS



McCloskey ***R105***

**DESCRIPTION**

Heavy duty mobile screener with following features:

- 12x4.5 heavy duty high energy 2 bearing screenbox.
- 100Hp Cat diesel engine.
- Track mobile.
- Direct feed Hardox lined hopper.
- Travel out fixed walkways.
- Integrated hydraulic folding stockpiling conveyors.
- Fast on site setup time – 10 minutes.
- Screen raises at lower end for easy bottom deck access.
- Service standing room inside Powerpack.

DIMENSIONS AND WEIGHTS

Length – working	12.65m (41' – 6")
Width – working	12.52m (41' – 1")
Length – transport	13.035m (42' – 9")
Width – transport	2.50m (8' – 2")
Height – transport	3.20m (10' – 6")
Weight – track	23,000 Kgs (50,700 lbs)

CAPACITIES

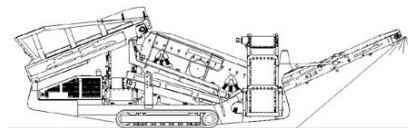
Diesel tank capacity	342 L (75 Gal, 90 US gal)
Hydraulic tank capacity	516 L (114 Gal, 136 US gal)
Capacity – hopper (level)	Approx 6m ³

BELT FEED CONVEYOR

Belt width	1200mm (48")
Belt spec	Heavy Duty Plain 500/4 8+2
Drive drum dia.	335mm (13.1")
Tail drum dia.	320mm (12.5")
Gearbox	Twin drive
Gearbox ratio	24.2 : 1
Gearbox torque	7,000Nm cont, 12,500Nm max
Motor	Danfoss/Eaton 125cc
Flow rate	72.6 Lpm (20 US gpm)
Adjustable speed	YES
Maximum speed	13 rpm

COLLECTION CONVEYOR

Belt width	1050mm (42")
Belt spec	Plain 400/3 4+2
Drive drum dia.	8"
Tail drum dia.	8"
Motor	Danfoss/Eaton 500cc
Flow rate	72.6 Lpm (20 US gpm)
Adjustable speed	YES
Maximum speed	145.2 RPM

**TAIL CONVEYOR**

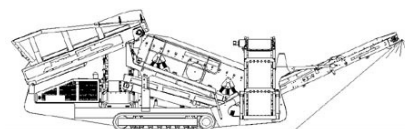
Stockpile height	3.45m (11' – 4")
Angle	18 to 25 degrees adjustable
Belt width	1200mm (48")
Belt spec	Heavy Duty Chevron – 500/3 5+1.5
Drive drum dia.	285mm (11.2")
Tail drum dia.	270mm (10.6")
Motor	Danfoss/Eaton 630cc
Flow rate	50.6 Lpm (13.3 US gpm)
Adjustable speed	YES
Maximum speed	80.5 RPM

FINE PRODUCT SIDE CONVEYOR

Stockpile height	3.6m (11' – 10")
Angle	20 to 25 degrees adjustable
Belt width	800mm (32")
Belt spec	Plain - 400/3 4+2
Drive drum dia.	10"
Tail drum dia.	8"
Motor	Danfoss/Eaton 400cc
Flow rate	50.6 Lpm (13.3 US gpm)
Adjustable speed	YES
Maximum speed	126.5 RPM

MID PRODUCT SIDE CONVEYOR

Stockpile height	3.63m (11' – 11")
Angle	14 to 25 degrees adjustable
Belt width	800mm (32")
Belt spec	Plain - 400/3 4+2
Drive drum dia.	10"
Tail drum dia.	8"
Motor	Danfoss/Eaton 400cc
Flow rate	50.6 Lpm (13.4 US gpm)
Adjustable speed	YES
Maximum speed	126.5 RPM

**SCREENBOX**

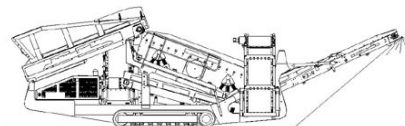
Dimensions – top deck	3.66m x 1.370m (12' x 4'-6")
Dimensions – bottom deck	3.455m x 1.370m (11.4' x 4'-6")
Screen area top & bottom deck	9.8 m ² (105.3 ft ²)
Bearing type	NSK 95mm bore – 22319
Screens – top deck	1.37m x 1.22m (4'-6" x 4') side tension – 3 off
Screens – bottom deck	1.37m x 1.67m (4'-6" x 5.5') end tension – 2 off
Tensioning – top deck	Quick release pin and wedge
Tensioning – bottom deck	Curved tension bar and adjuster
Screen angle	14 to 20 degrees adjustable
Screen motor	David Brown Hyd. MCC2208 (58.7cc/rev)
Drive system	Direct drive with HRC180 coupling
Hydraulic flowrate	72.6 Lpm (20gpm)
Speed adjustable	YES – Pressure compensated FCV
Screen stroke adjustable	10mm maximum
Screen shaft speed	940 - 960 rpm
Screen 'g' force	4.29 – 5.05 g

POWERUNIT AND HYDRAULICS

Engine	CAT C4.4(Teir 3)
Engine power	100 HP
Engine speed	2175 - 2225 rpm
Flywheel Pump 1	David Brown Hyd. 5033,5033
LH PTO Pump 2	David Brown Hyd. 5023,5023
Total system flow	246.04 Lpm (65 US Gpm)
Hydraulic tank capacity	516 L (114 Gal, 136 US gal)
Hydraulic tank ratio	2.1 : 1
Hydraulic Oil cooler	YES

ELECTRICS

Emergency stops	4 off, 2 powerunit RH&LH, 2 chassis front sides RH&LH.
Chassis cabling	Armored cable
Start Siren	YES – 10 sec delay
Engine shutdowns:	Low oil pressure High water temp Air filter blockage (selectable) Fuel contamination Low hydraulic tank level
Engine room light	YES
Radio control tracks	optional – Hetric system
Pendant track control	YES – plugged in at feeder end

**TRACKS**

Width	400mm (1' - 4")
Length	2500mm (8' - 2") crs.
Height	739mm (2' - 5")
Gearbox	Bonfiglioli 707
Ratio	122:1
Motor	Rexroth A2FE 63
Speed max	1.15 Kph (0.82 Mph)
Flow rate	72.6 Lpm (20 US Gpm)
Attachment to chassis	Bolt On for quick change

OPTIONS

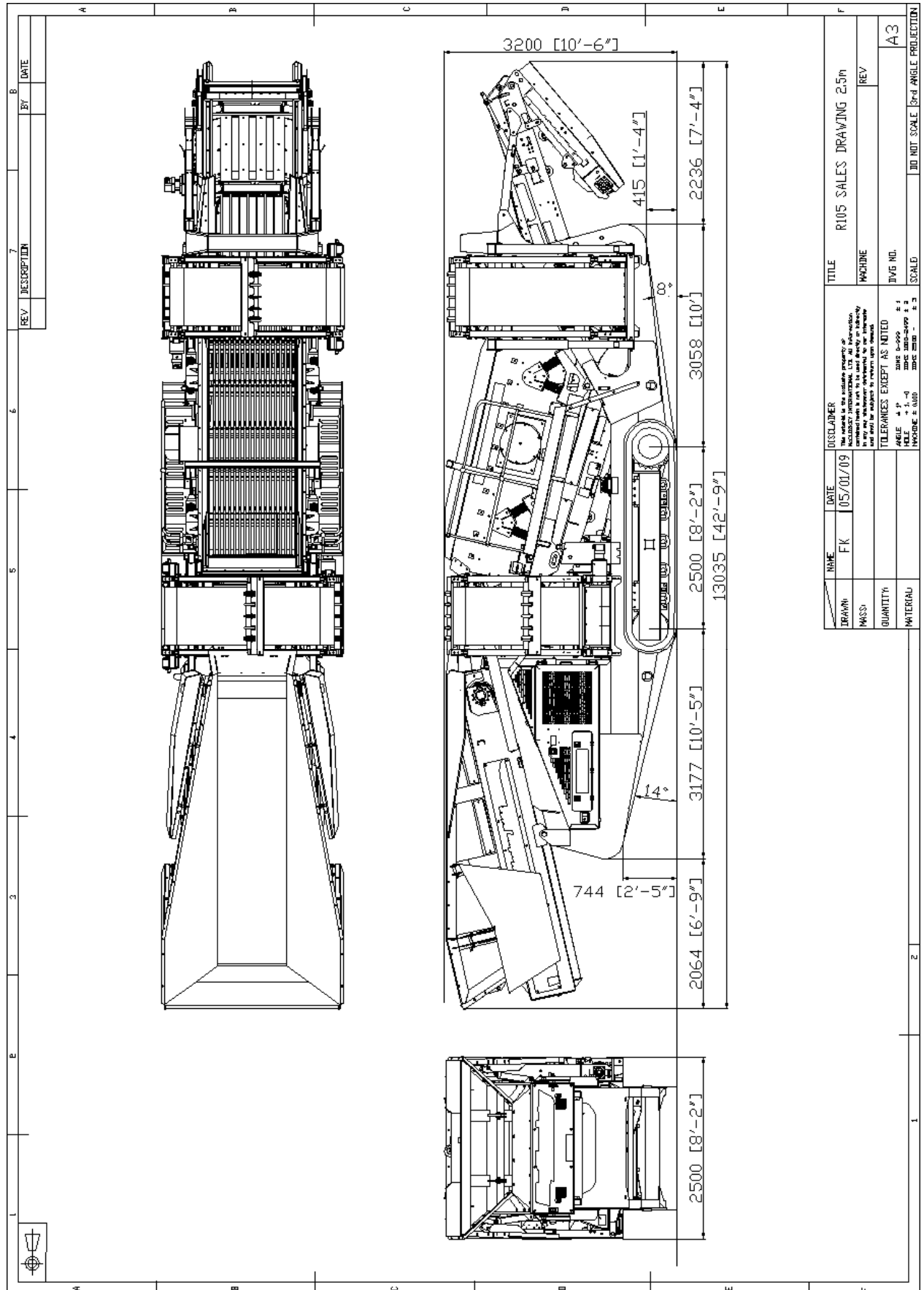
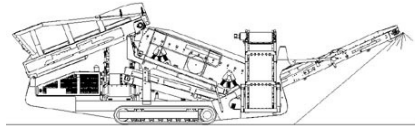
- Heavy duty top deck finger screen.
- Bottom deck finger screen.
- Top deck punch plate screen.
- Bottom deck punch plate
- Top deck Bofor screen.
- Radio remote control for tracks.
- Plate Apron Feeder instead of Belt Feeder.
- Hydraulic folding hopper extensions.

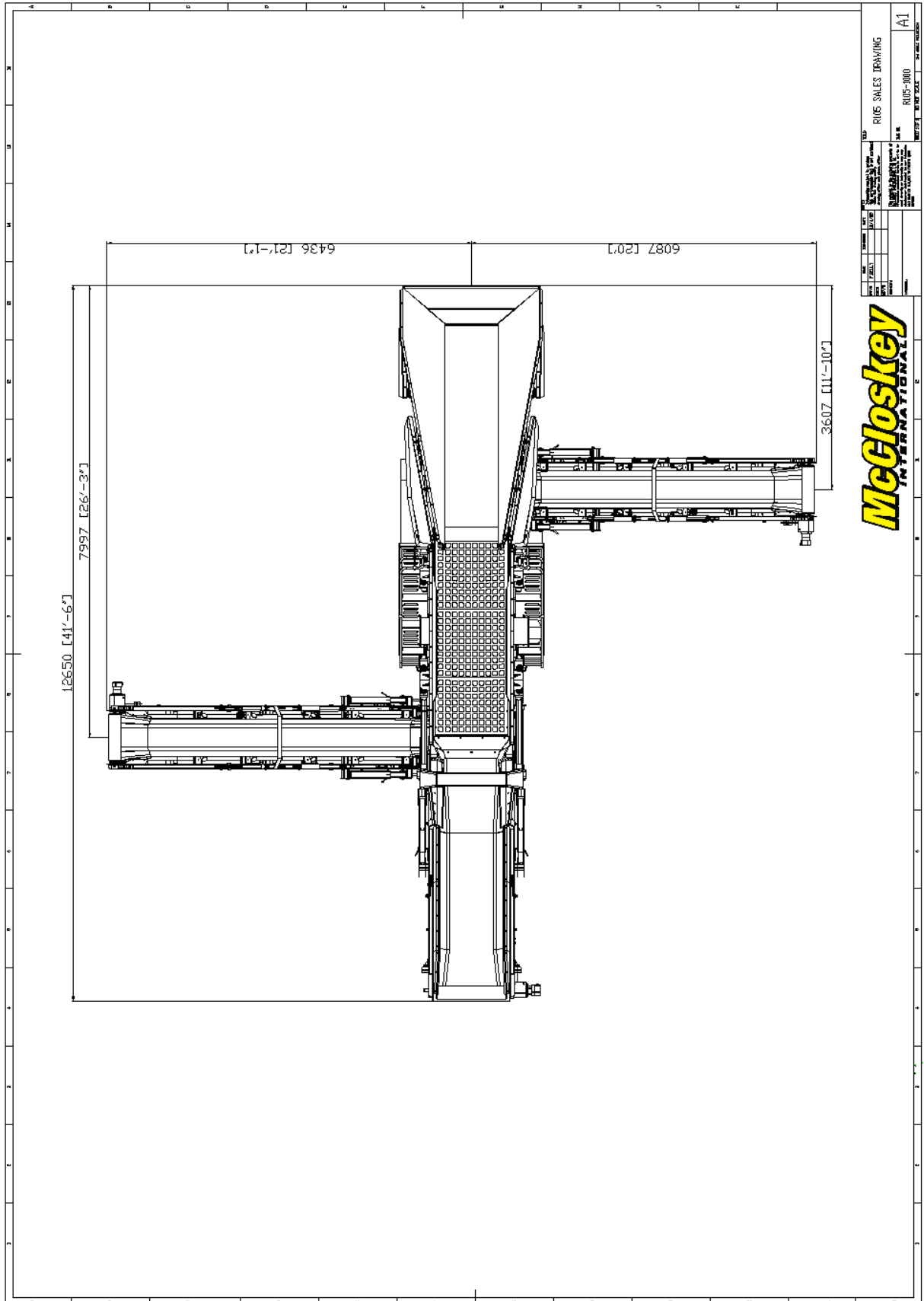
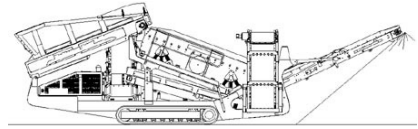
APRON FEED CONVEYOR

Apron width	1050mm (42")
Apron spec	10mm Hardox upper surface
Gearbox	Brevini
Gearbox ratio	16:1
Gearbox torque	10,000Nm cont, 15,000Nm max
Motor	D Danfoss/Eaton 400cc
Flow rate	72.6 Lpm (20 US gpm)
Adjustable speed	YES
Maximum speed	TBC

SAFETY FEATURES

- External belt alignment points.
- External grease points.
- Engine safety shutdown systems.
- Full safety guarding for nip points.
- CE compliance.





R105 SALES DRAWING		A1
R105-000		
DATE: 04/01/09		
DRAWN BY: [Name]		
CHECKED BY: [Name]		
APPROVED BY: [Name]		
SCALE: 1:1		
SHEET NO. 1 OF 1		

